

# Filezilla: Installation

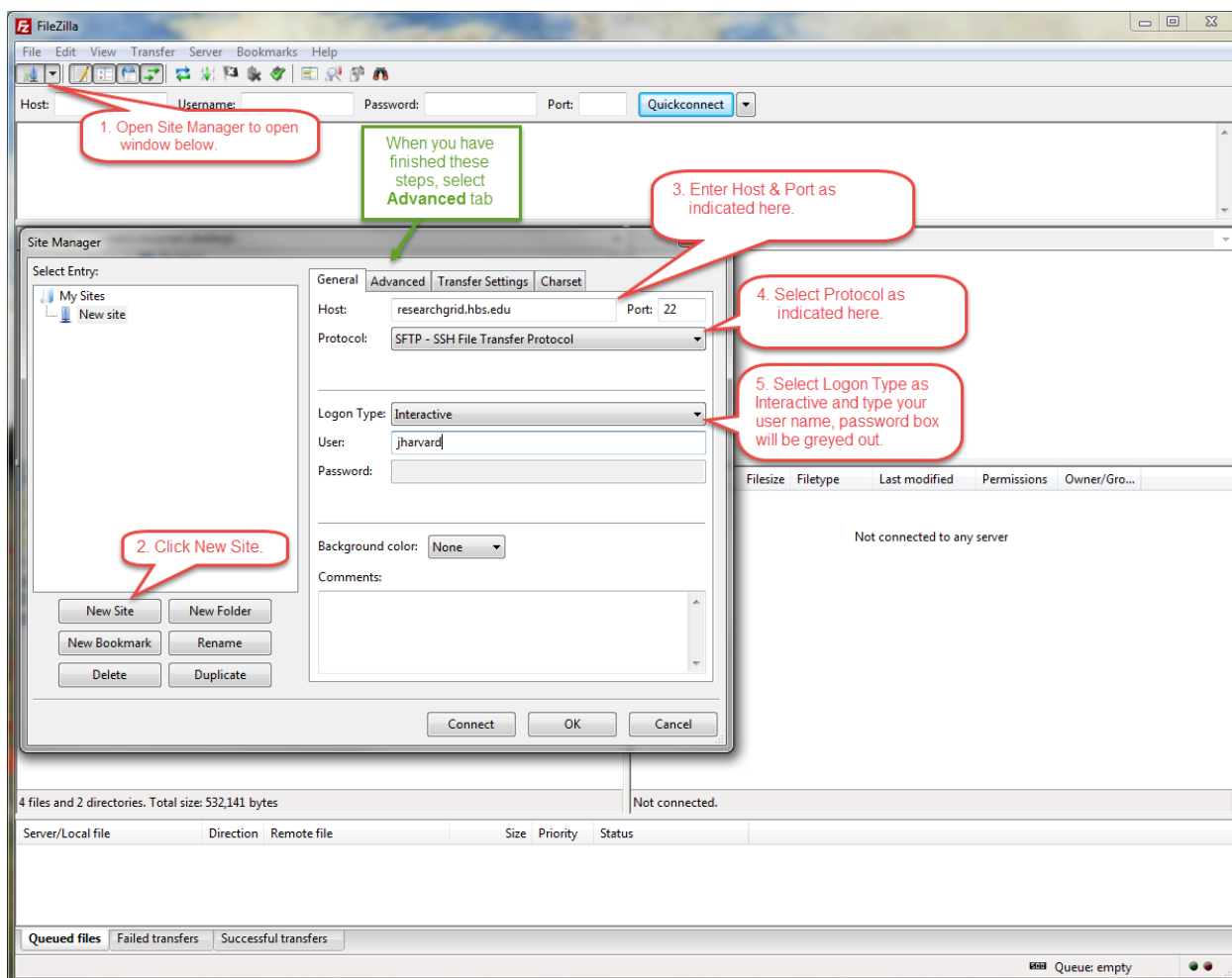
Download and install the Filezilla: [Filezilla-project.org](http://Filezilla-project.org)

## Launch Filezilla

1. Click the *Site Manager* icon
2. Click *New Site*

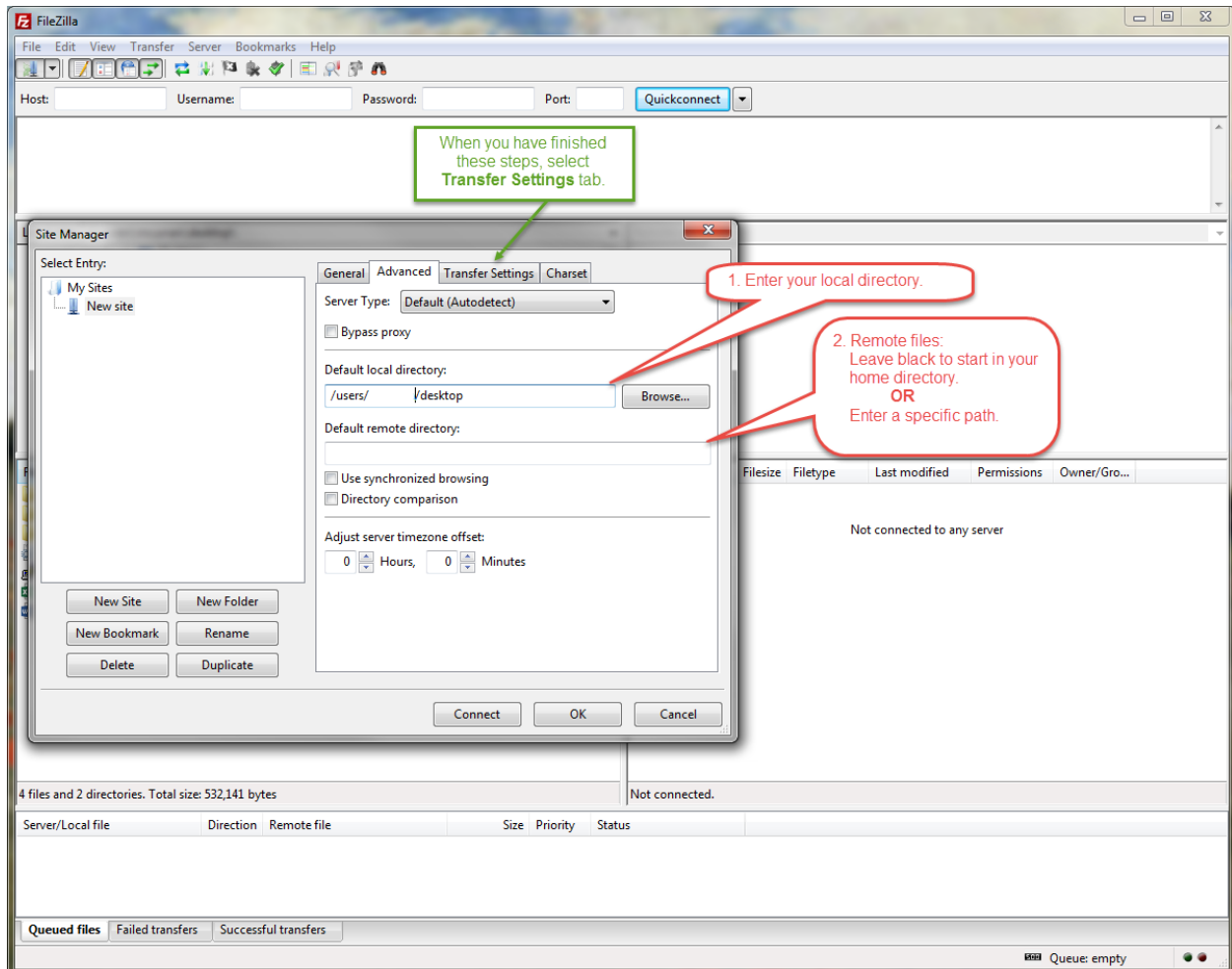
## General Tab

3. Type Host: *researchgrid.hbs.edu* / Port: *22*
4. Select Protocol: *select SFTP - SSH File Transfer Protocol*
5. Select Login Type: *Interactive*  
Type User: your HBS username (password box will be greyed out)
6. Click *Advanced* tab



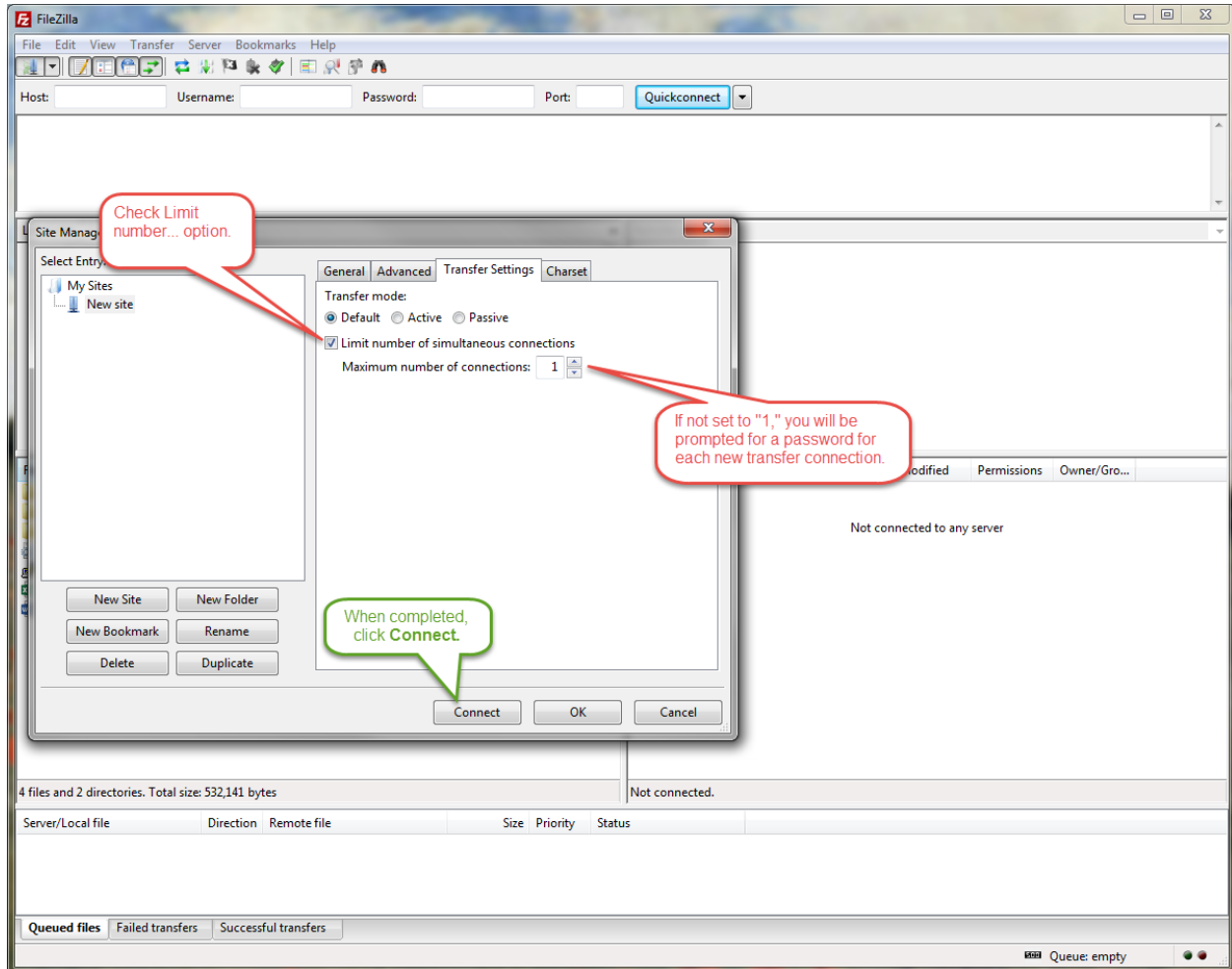
## Advanced Tab

1. Type the local (your computer) directory/folder you'd like to start in when connecting. You can type this in or click the *Browse* button and find the directory you want.
2. Optional -- Default remote directory:
  - a. Leave blank if you want to connect to your account's home directory (or)
  - b. Enter a directory if you wish to connect to a specific directory
3. Click *Transfer Settings* tab

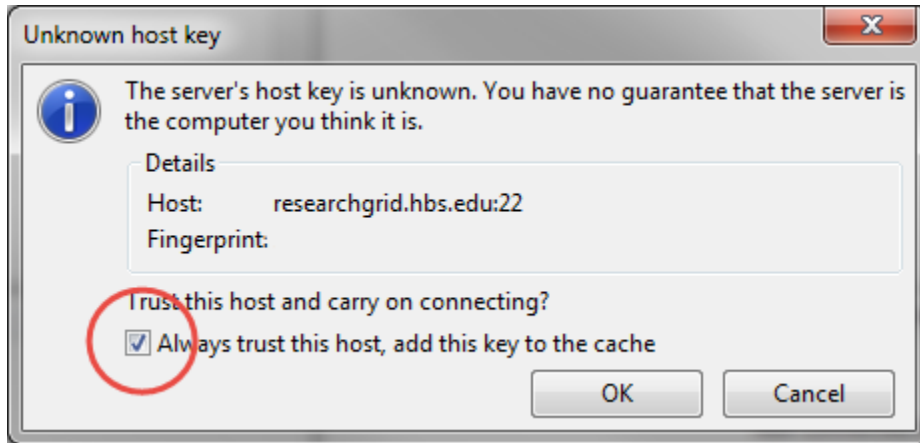


## Transfer Tab

1. Tick the *Limit number of simultaneous connections* box
2. Set Maximum number of connections to "1"
3. Click *Connect* (if you're just making a bookmark for later, click OK)



The first time you connect you will see a window titled "Unknown host key". Check the "Always trust this host, add this key to the cache" box and click OK.



A password prompt box will pop up. Enter your RCS account password here.

- Check "Remember password until FileZilla is closed", otherwise it will prompt you periodically and interrupt transfers
- Click OK

