

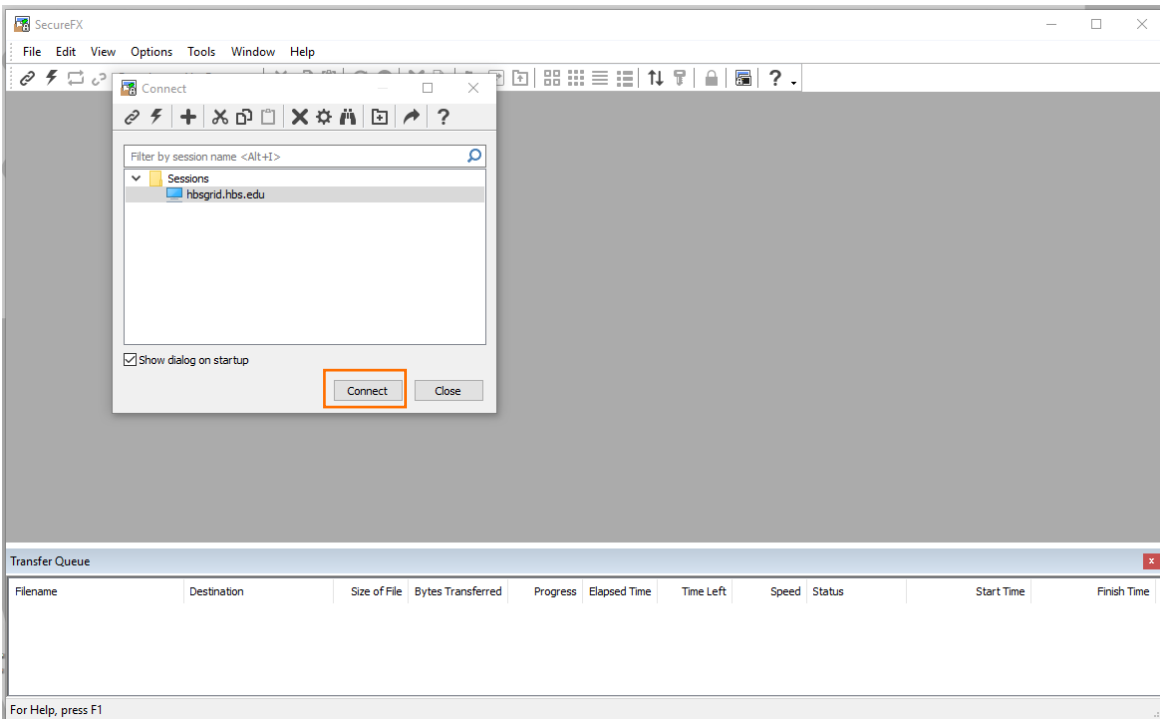
SecureFX

Connecting to the Grid & Transferring Files from your Computer to the Grid

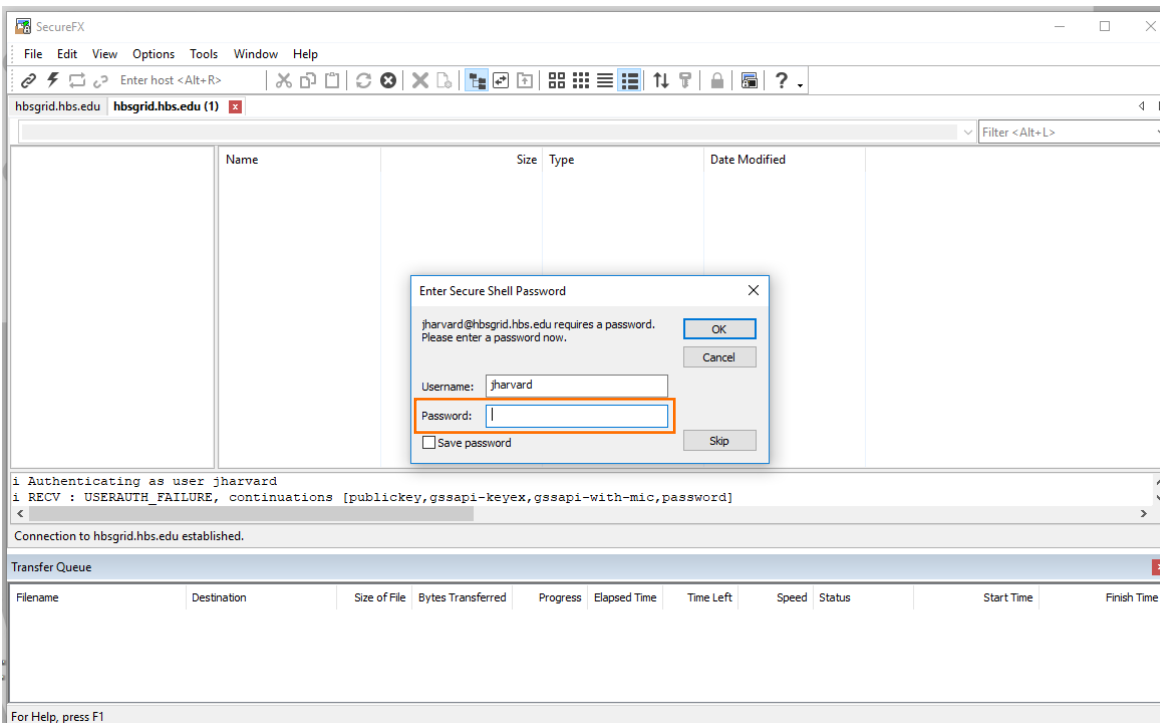
– Connecting to the Grid –

Open **SecureFX** on your machine (SecureFX is preinstalled on HBS machines)

Click **Connect**



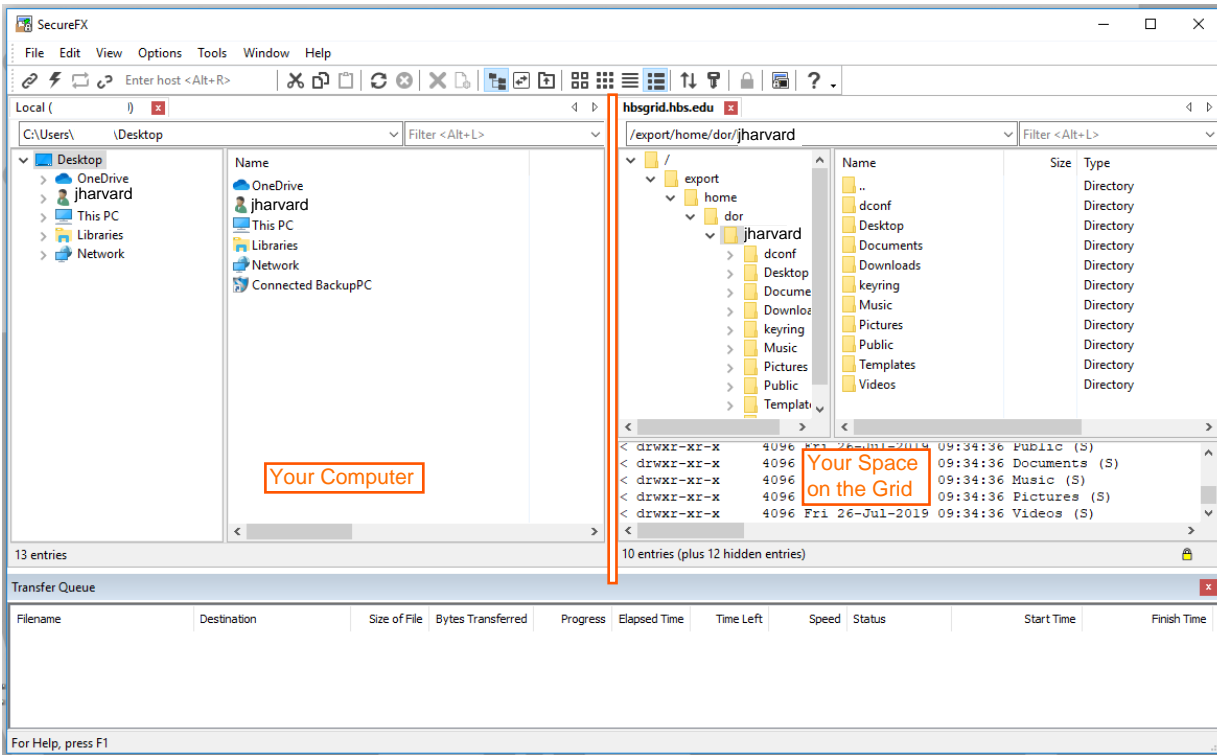
Enter your HBS **Username** and **Password**, then click **OK**



- Transferring Files to the Grid -

On the left, you will see your *machine's files*

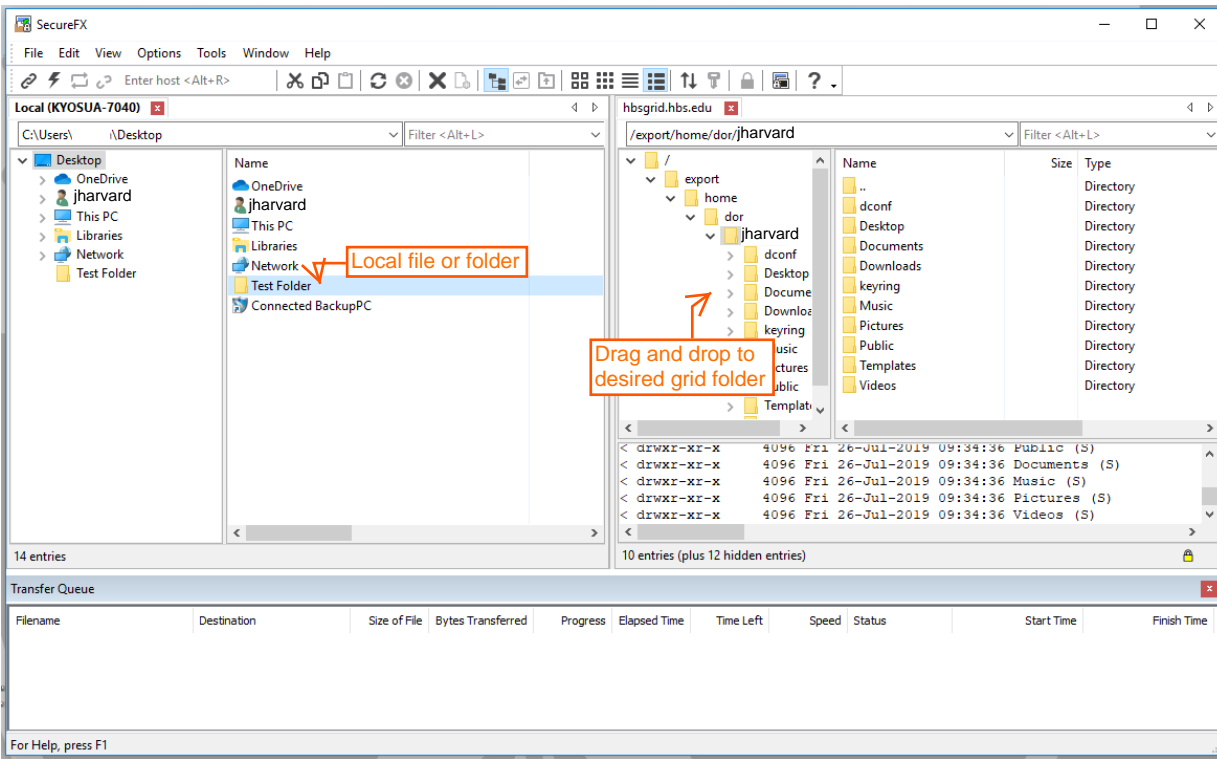
On the right, you will see your *grid files*



Find the grid folder (right side) to which you want to save your file

Select the file you want to transfer (left side), click, and drag to the desired folder on the right

You may also transfer files from the grid to your local machine by the same process



You can now access your files on the grid

When finished, click **File** and then **Exit**